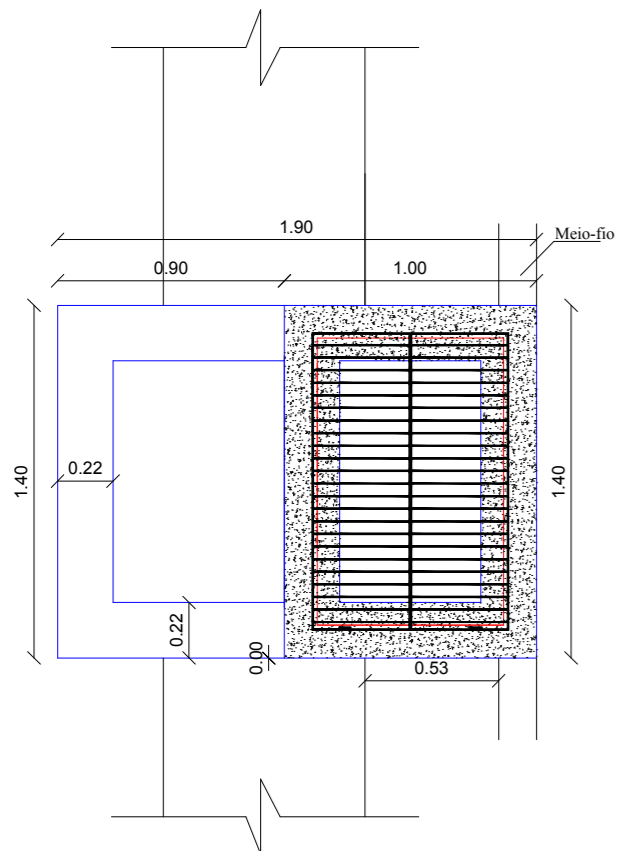
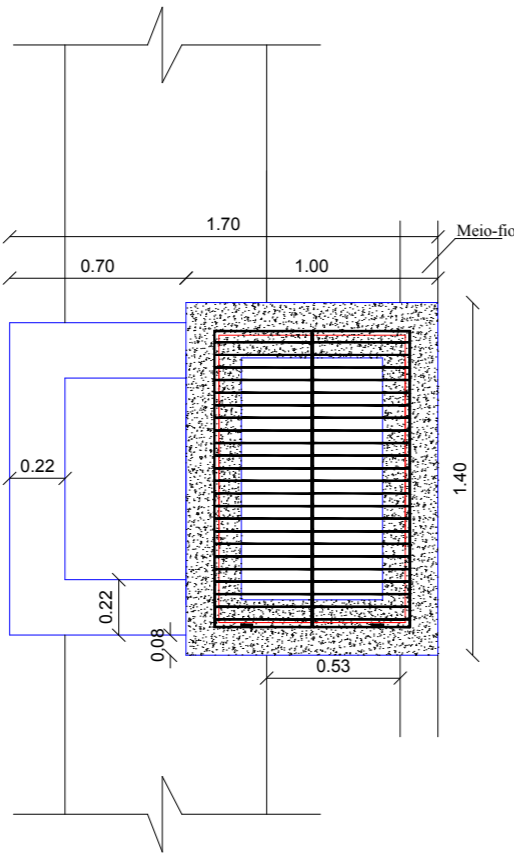


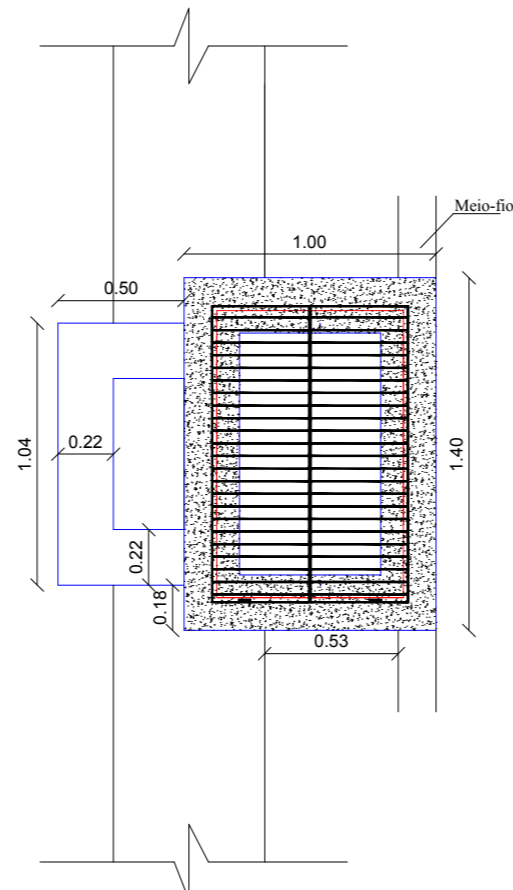
BOCA DE LOBO Ø100CM
TIPO 2



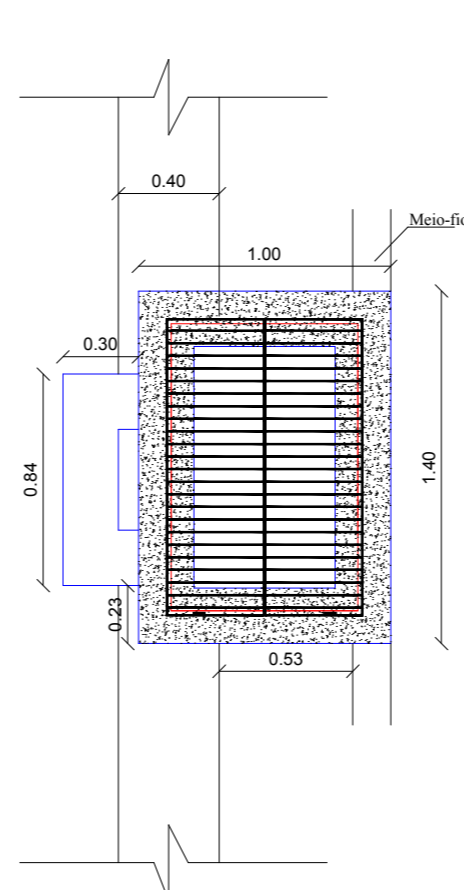
BOCA DE LOBO Ø80CM
TIPO 2



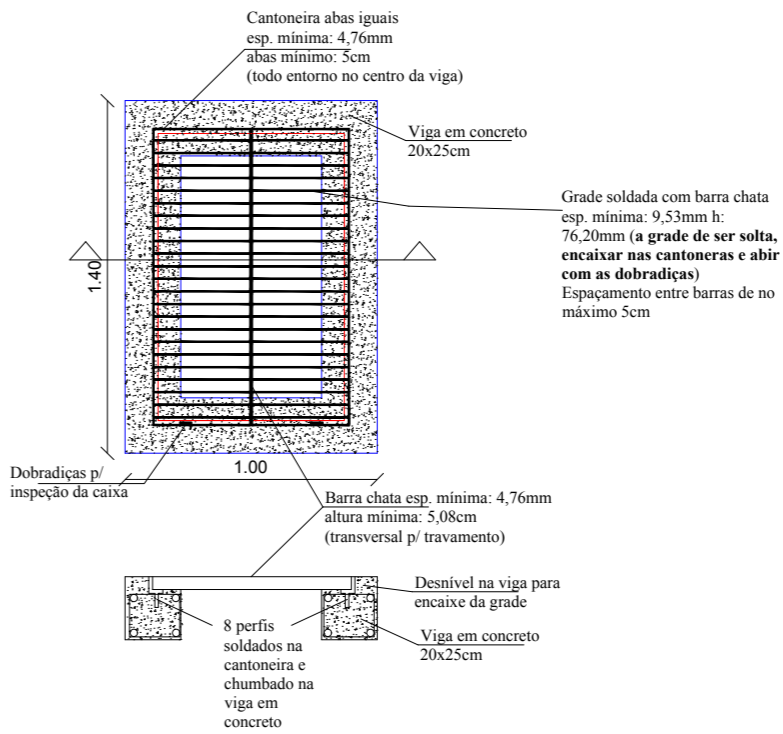
BOCA DE LOBO Ø60CM
TIPO 2



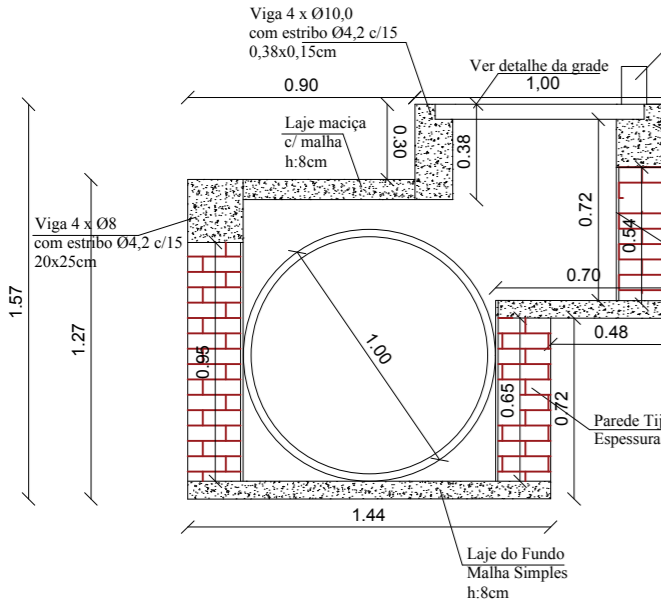
BOCA DE LOBO Ø40CM
TIPO 2



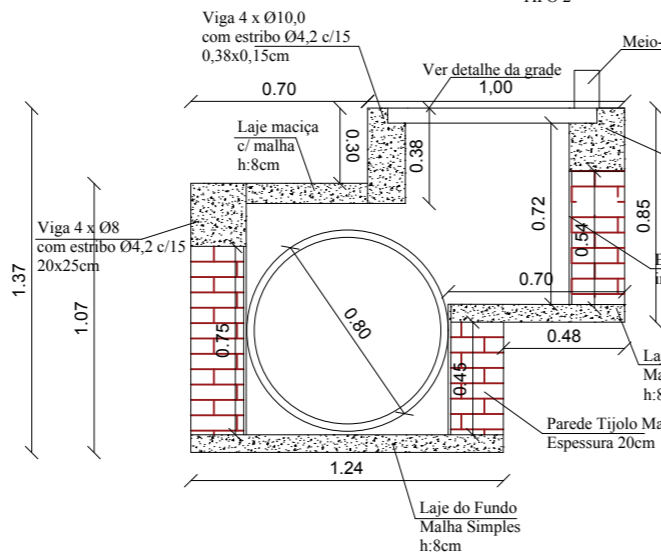
DETALHAMENTO GRADES



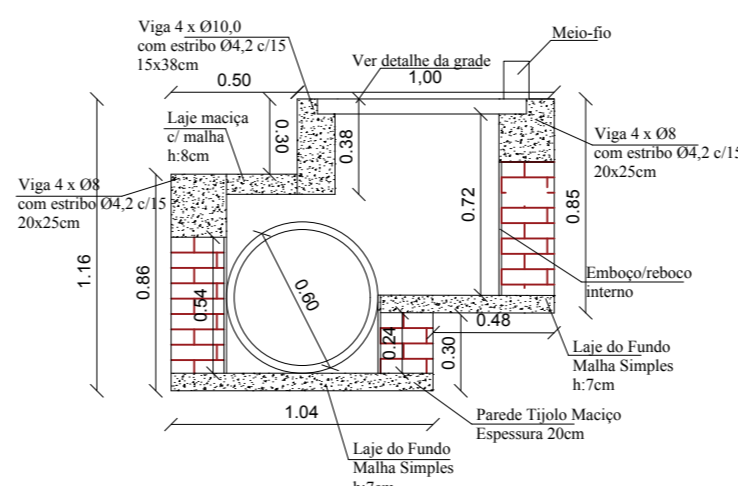
BOCA DE LOBO Ø100CM
TIPO 2



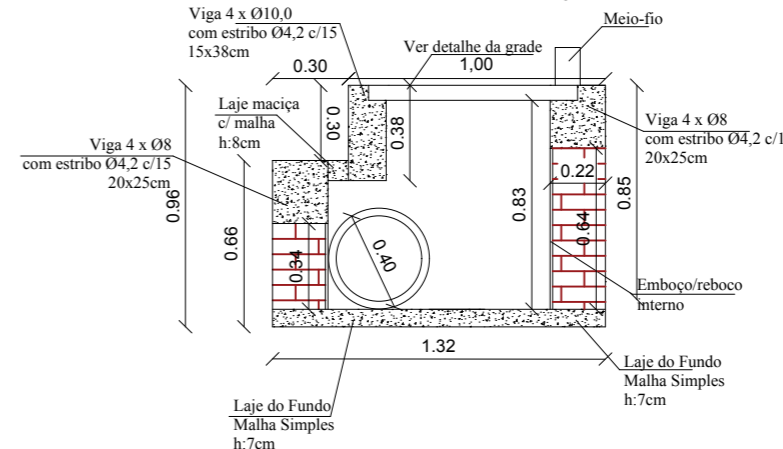
BOCA DE LOBO Ø80CM
TIPO 2



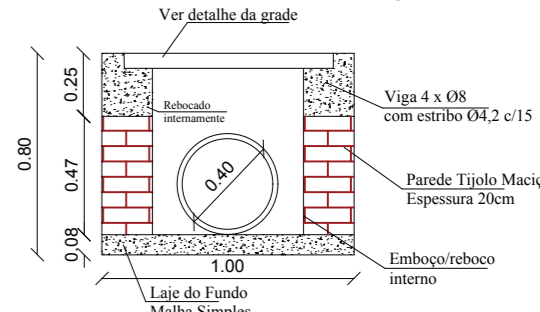
BOCA DE LOBO Ø60CM
TIPO 2



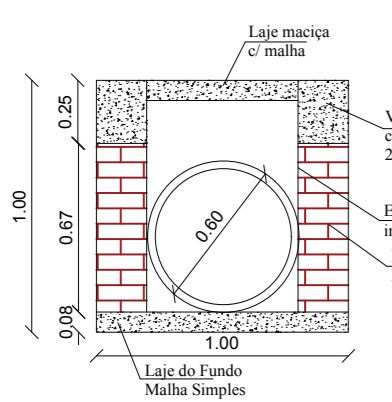
BOCA DE LOBO Ø40CM
TIPO 2



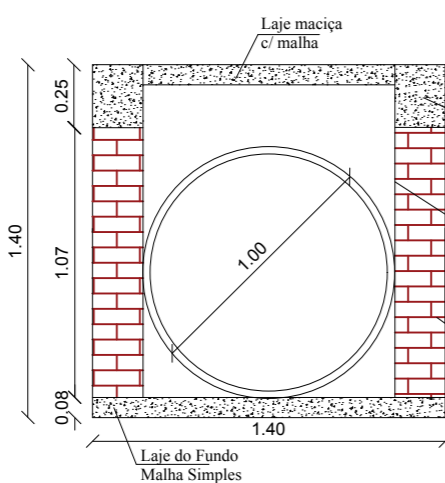
BOCA DE LOBO Ø40CM
TIPO 1



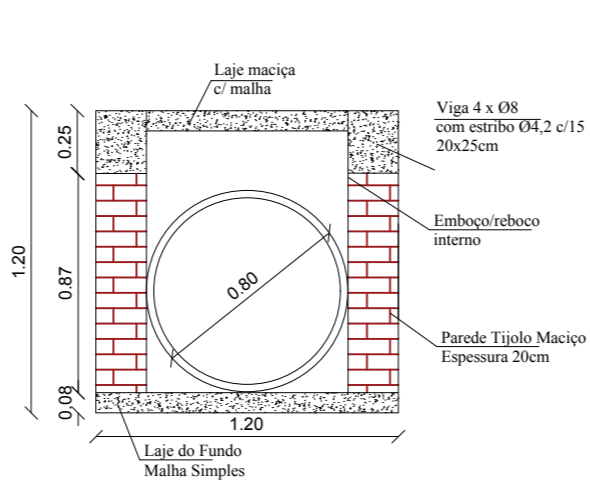
CAIXA CEGA Ø60CM



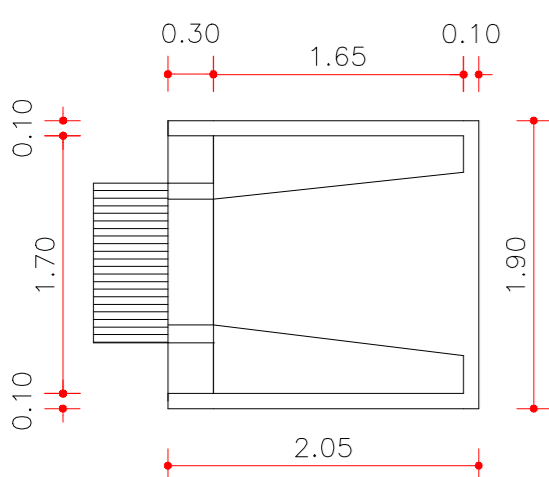
CAIXA CEGA Ø100CM



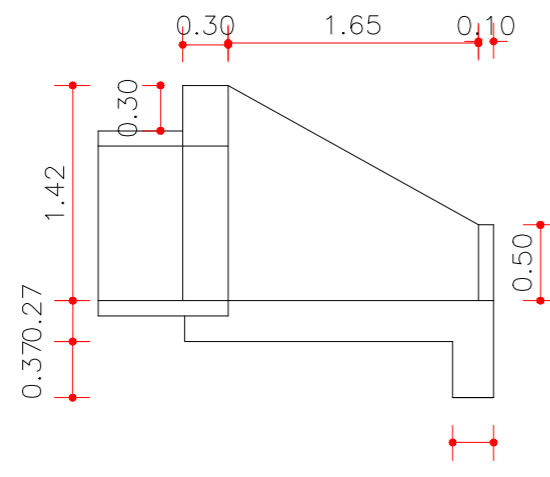
CAIXA CEGA Ø80CM



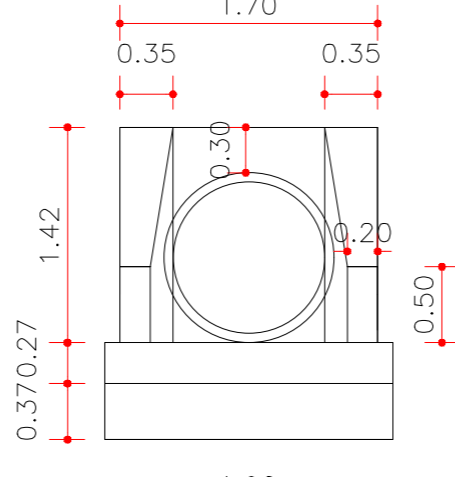
Esquema de bocas para bueiros tubulares simples
Diametro: 100



Planta Baixa

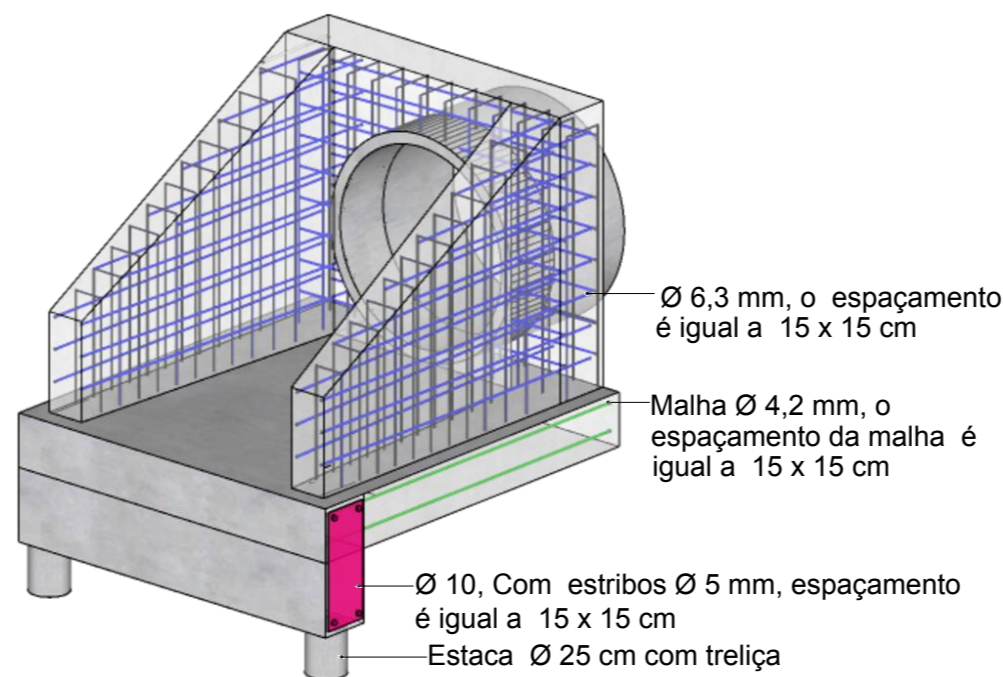


Vista lateral



Vista frontal

fonte: DINIT (2018).



PERSPECTIVA



DEPARTAMENTO MUNICIPAL DE ENGENHARIA			
PROPRIETÁRIO: PREFEITURA MUNICIPAL DE TENENTE PORTELA			
PROJETO: PAVIMENTAÇÃO ASFALTICA		ÁREA CONSTRUÍDA:	
LOCAL: TRAMANDARÉ		DATA: JUNHO/2024	
PRANCHA: Detalhamentos boca de lobo		Colaboração: ESTHEFANI MULLER ESTAGIÁRIO DE ENGENHARIA CIVIL	
Engenheiro Civil ELIANDRO TIECKER		REGISTRO CREA: 180283	
Resp. Técnico		ESCALA: S/E	PRANCHA: 05/05
Prefeito Municipal			